



The
Beautiful
Garden of Eden

written by Gary Bower | illustrated by Barbara Chotiner

The Beautiful Garden of Eden

written by Gary Bower | illustrated by Barbara Chotiner



Tyndale House Publishers, Inc.
Carol Stream, IL

To Maylin Jo

Visit Tyndale's website for kids at www.tyndale.com/kids.

Visit Gary Bower online at www.bowerarts.com.

TYNDALE is a registered trademark of Tyndale House Publishers, Inc. The Tyndale Kids logo is a trademark of Tyndale House Publishers, Inc.

The Beautiful Garden of Eden

Copyright © 2017 by Gary Bower. All rights reserved.

Illustrations copyright © Barbara Chotiner. All rights reserved.

Designed by Jacqueline L. Nuñez

Edited by Sarah Rubio

Scripture quotations are taken from the *Holy Bible*, New Living Translation, copyright © 1996, 2004, 2015 by Tyndale House Foundation. Used by permission of Tyndale House Publishers, Inc., Carol Stream, Illinois 60188. All rights reserved.

For manufacturing information regarding this product, please call 1-800-323-9400.

Library of Congress Cataloging-in-Publication Data

Names: Bower, Gary, date, author.

Title: The beautiful garden of Eden / Gary Bower.

Description: Carol Stream, Illinois : Tyndale House Publishers, Inc., [2017]

1 Series: Faith that God built | Audience: Age 4-7. | Audience: Grade K to Grade 3.

Identifiers: LCCN 2016010621 | ISBN 9781496417435 (hc)

Subjects: LCSH: Eden--Juvenile literature.

Classification: LCC BS1237 .B69 2017 | DDC 222/.1109505--dc23 LC record available at <https://lccn.loc.gov/2016010621>

Printed in China

23	22	21	20	19	18	17
7	6	5	4	3	2	1

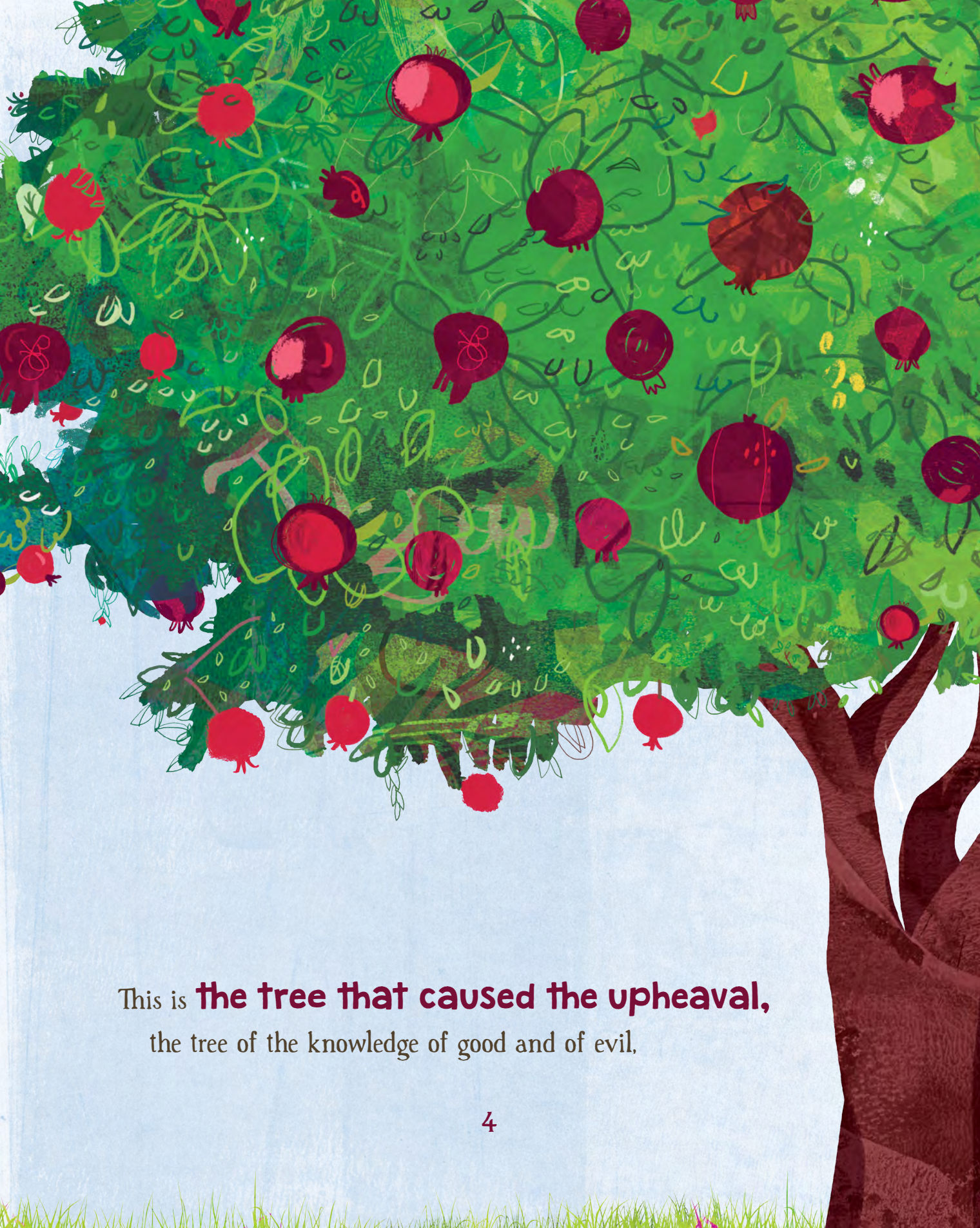


This is the **Garden of Eden.**

These are **the trees that swayed in the breeze**
in the beautiful **Garden of Eden.**



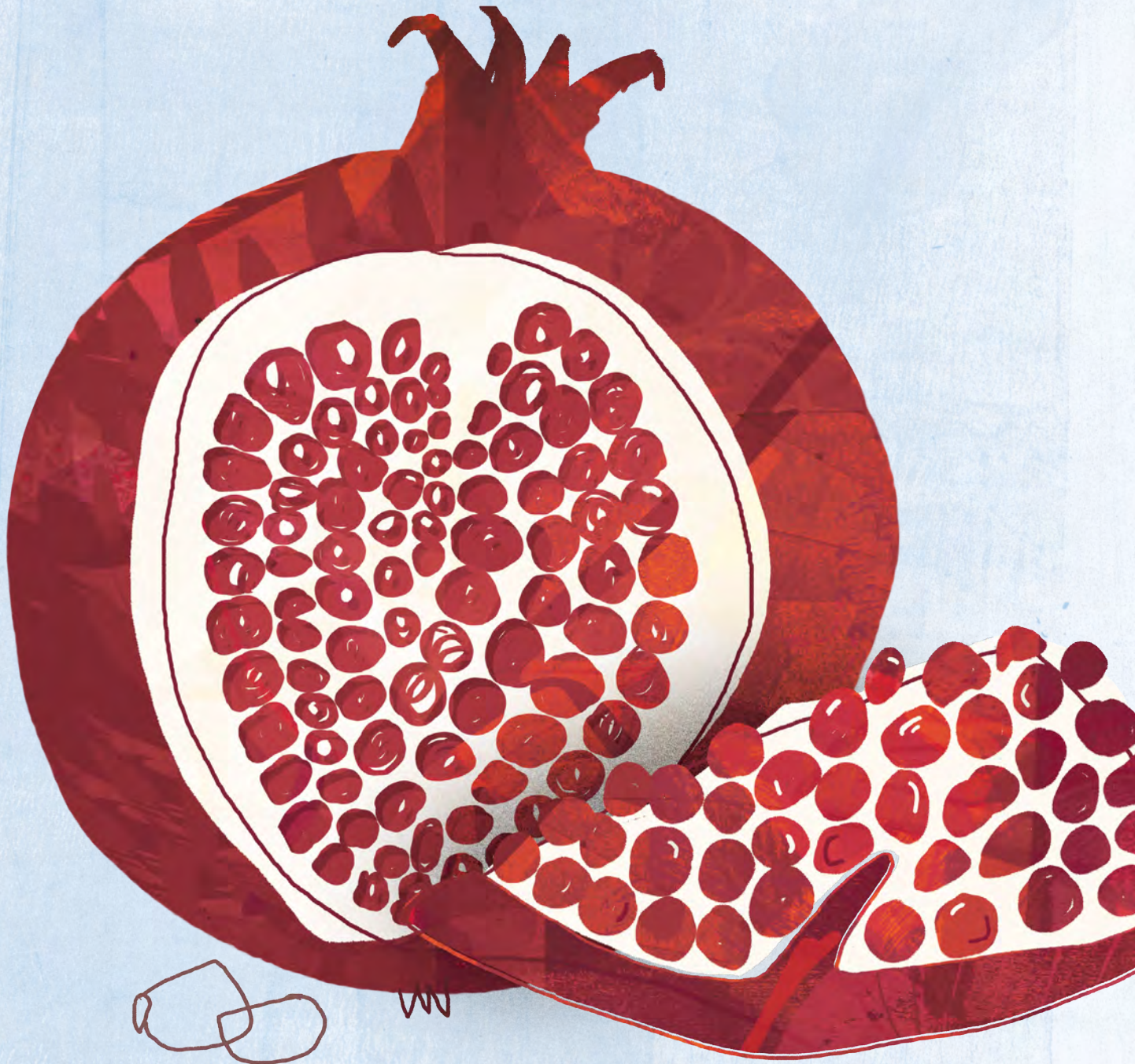




This is **the tree that caused the upheaval,**
the tree of the knowledge of good and of evil,



That grew with **the trees that swayed in the breeze**
in the beautiful **Garden of Eden.**



This is **the fruit, so slurpy and sweet,**
that God warned His gardeners never to eat,



